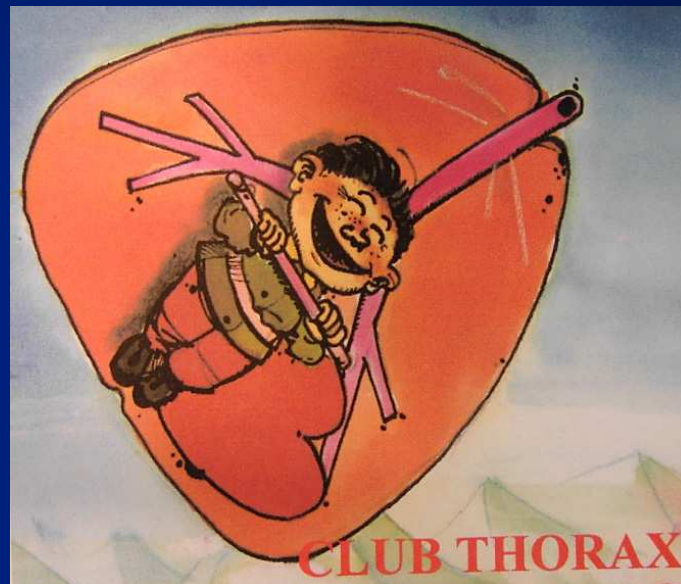
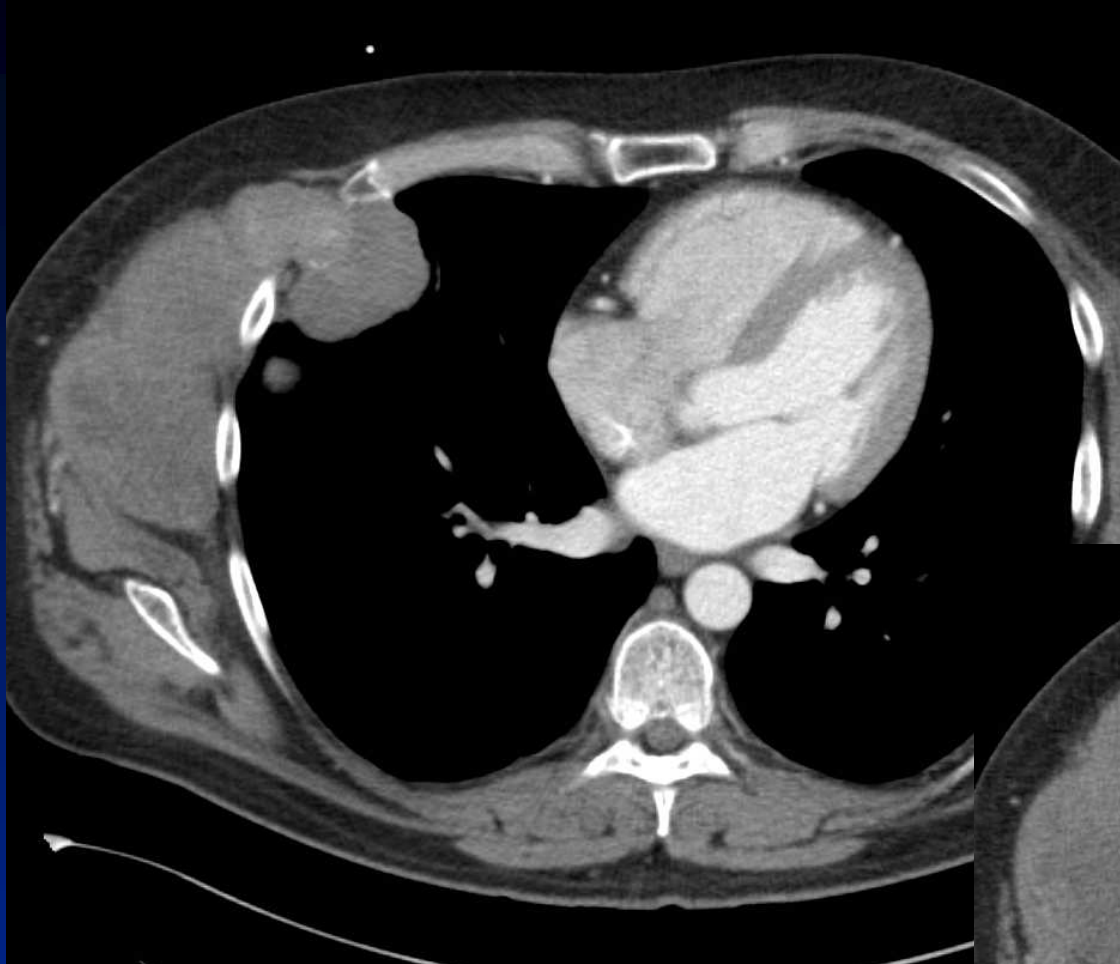


Quiz novembre 2009

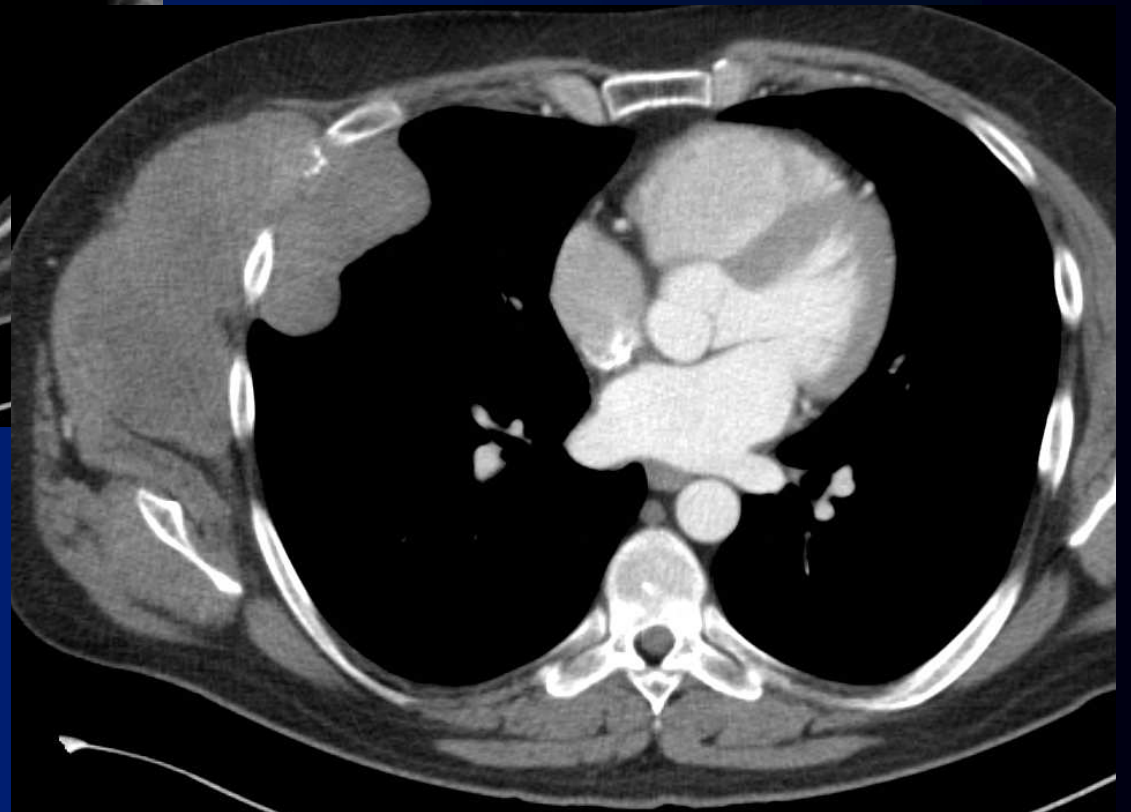
B Ghaye

- Homme 24 ans
- Masse douloureuse pariétale thoracique droite

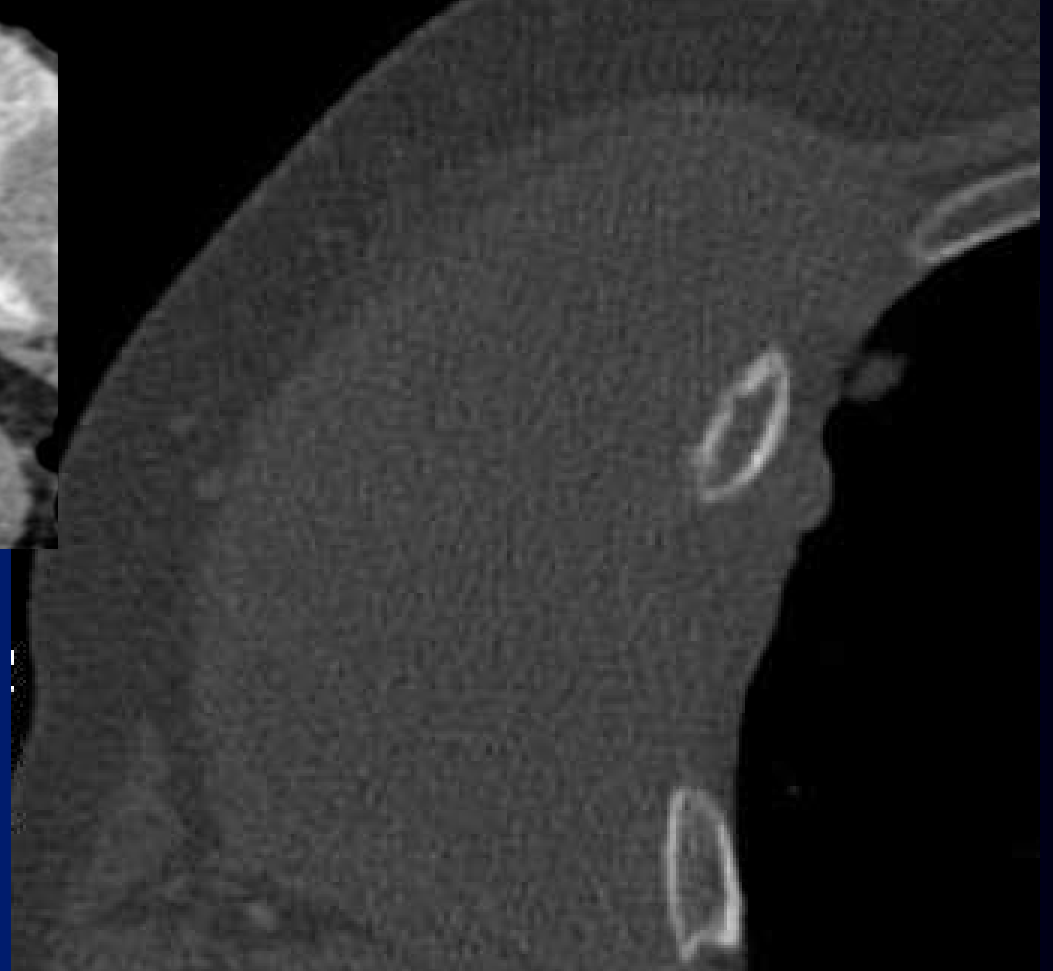
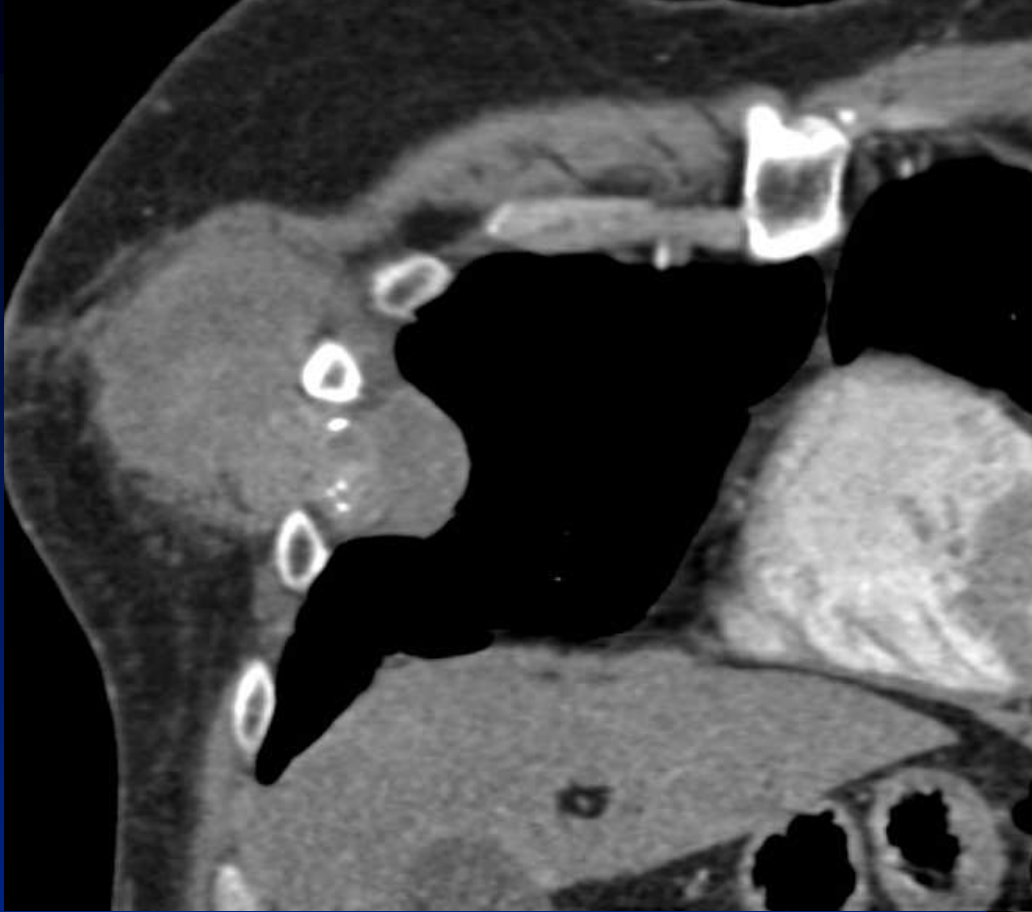


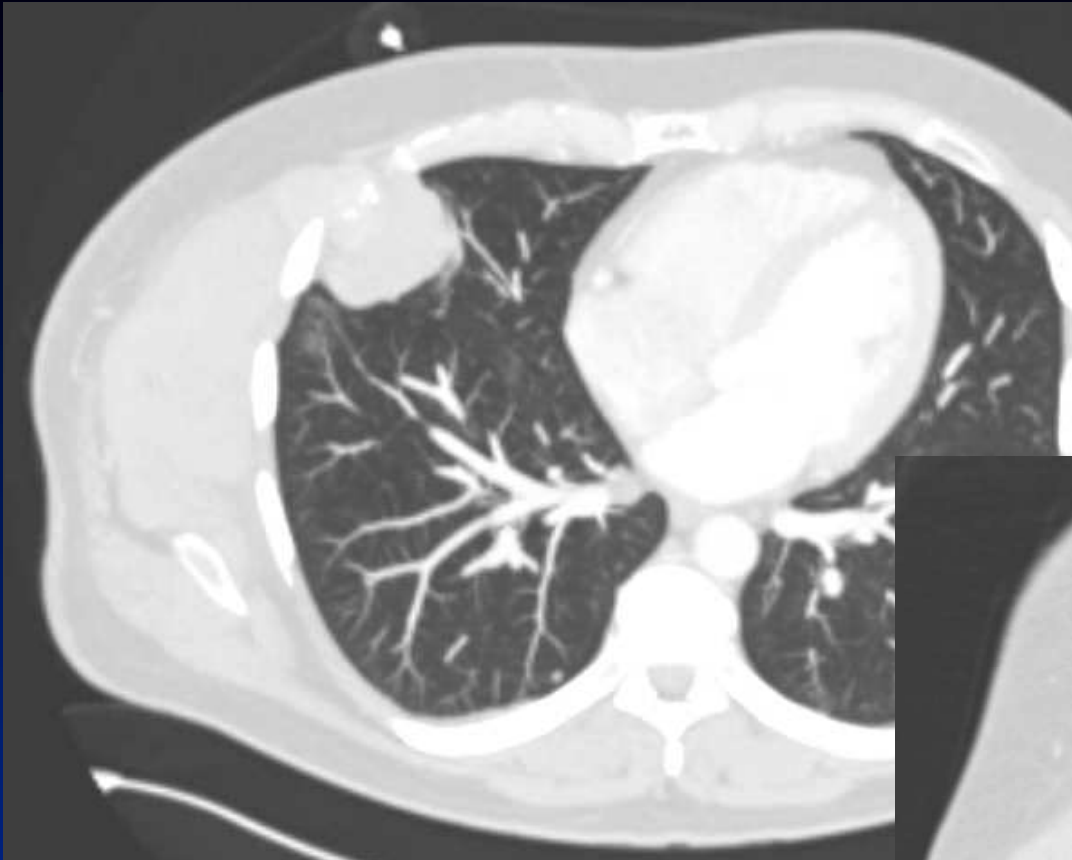


TDM

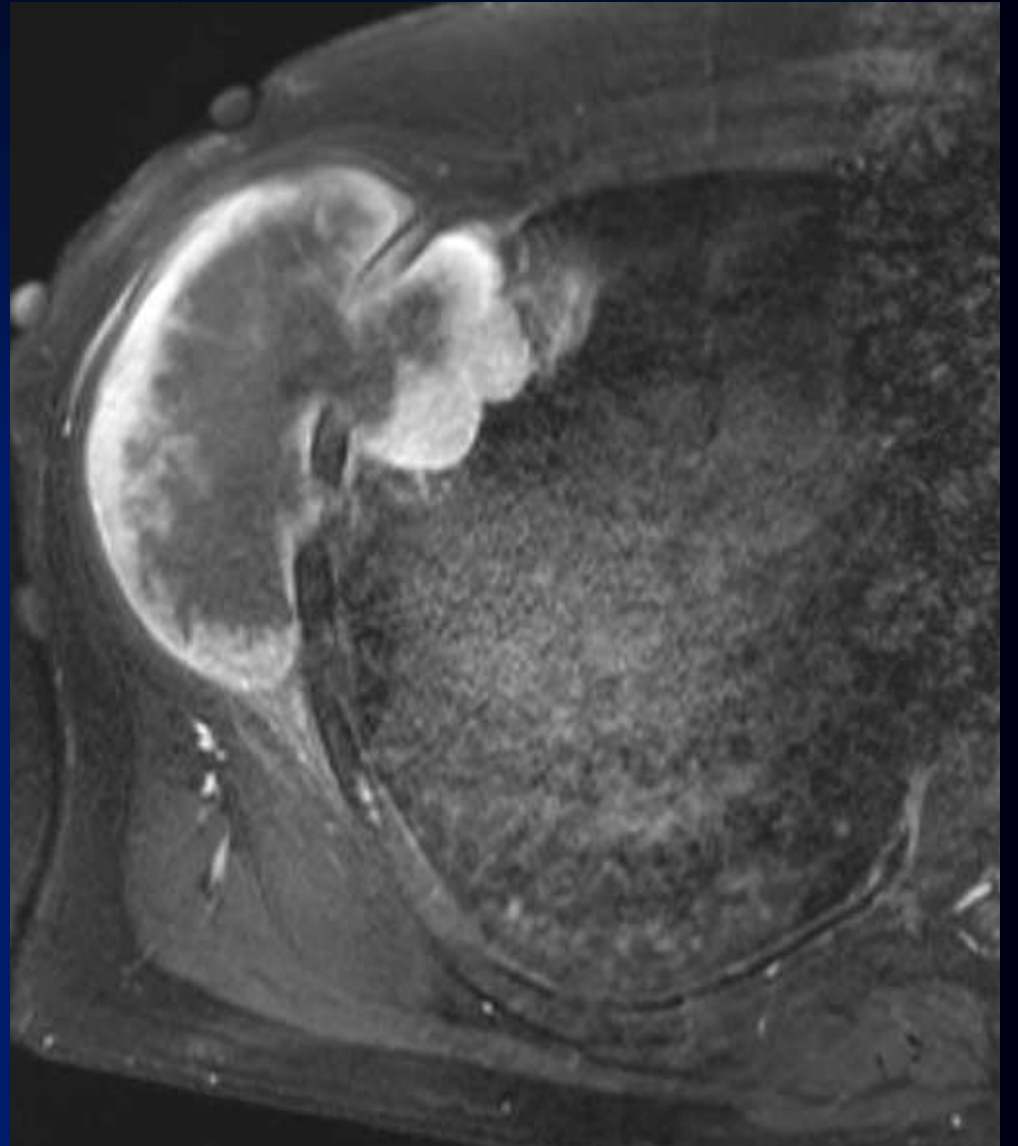
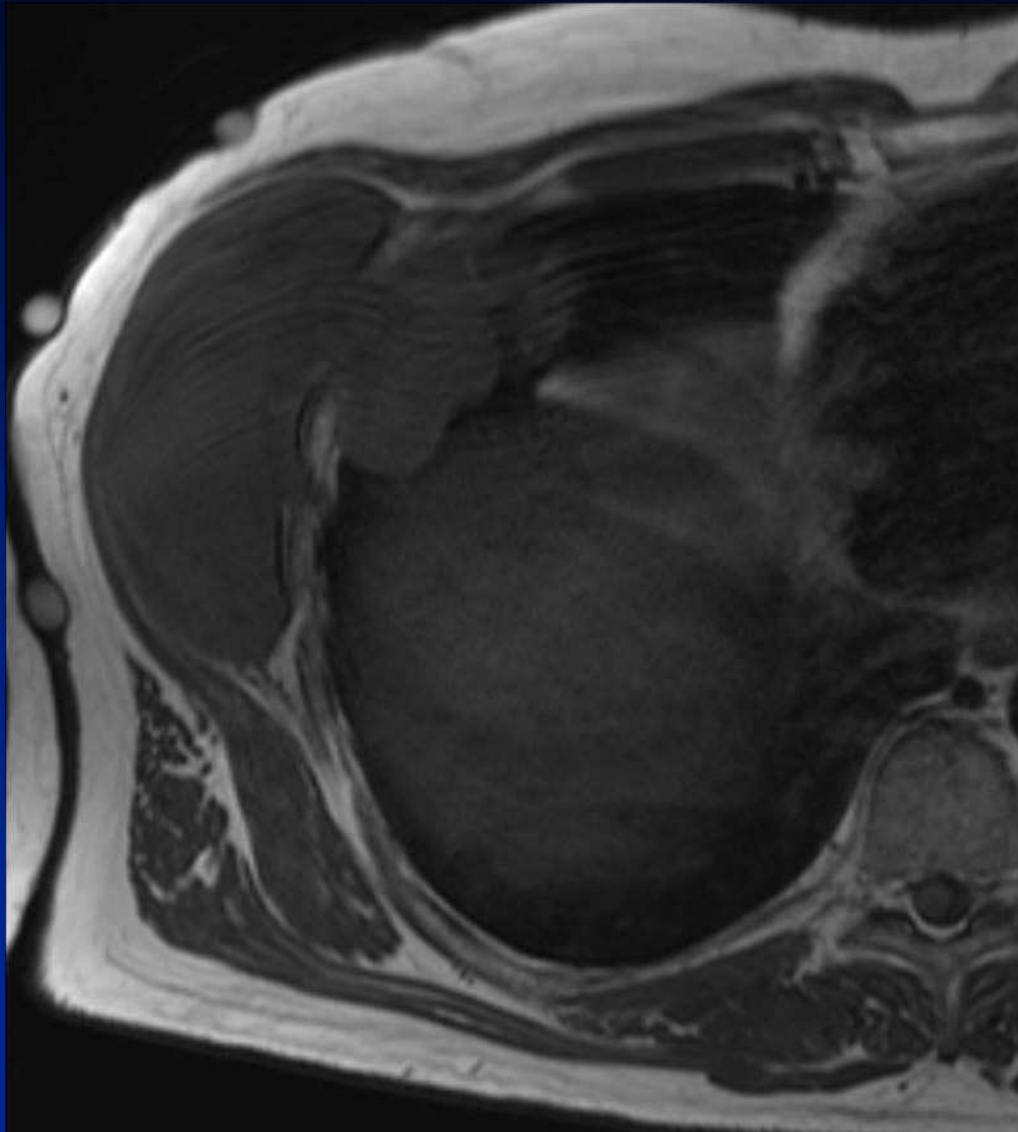








IRM



Ostéosarcome

- Groupe très hétérogène
- Production d'os immature et de matrice ostéoïde
- Localisations rares : côtes, scapula, clavicule
- Présentation variable
- Masse douloureuse des parties molles
- Tumeur infiltrante, métastases – Pronostic sombre
- **CT:** Rupture corticale et réaction périostée agressive
- **IRM: Tumeur hétérogène** (Ca⁺⁺, hémorragie, kyste, nécrose)